

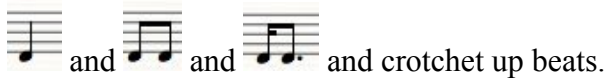
# Folk Fiddle lessons / Group Sight reading / Violins / Violas / Cellos /

Music for the Keel Row hornpipe.

**Key:** G Major / A Major

**Time signature:** 4/4

**Rhythms:** This tune contains the following elements:



My group sight-read a new tune each week and in order to get the tune under way quickly nearly all parts have the same rhythm. The 3rd and 2nd parts have more repeated notes than the 1st encouraging concentration on rhythm rather than notes.

**Level of ability:** There are three parts:

- i) The tunes chosen require a good working knowledge of the keys with any finger pattern 1\_23 or 12\_3 or 1\_2\_3 involved. This part is available in Treble and Alto (usually an 8ve lower) and Bass clefs.
- ii) 2nd Violin/Viola part (Treble clef) uses basic rhythms in the 1\_23 pattern. This version can also be used to encourage more advanced violists to sight read in the Treble clef. (Alto clef sheet music is available for beginner violists. Bass for cellists).
- iii) 3rd Violin/Viola part (Treble clef) consists of open strings and 1st fingers and has been designed to be suitable for pupils who have just completed a year of Wider Opportunities or are sight-reading in an orchestra for the first time. The Treble clef part can be used to encourage more advanced violists to sight-read in both clefs. (Alto clef sheet music is available for beginner violists. Bass for cellists).

A range of straightforward rhythms have been used to encourage the reading of whole bars at a time in advance.

**To access:** Only my pupils can access this course.

**Violin / Sight reading / Fiddle / Sight reading / Viola / Sight reading / Cello / Sight reading / Fiddle Orchestra / Sight reading /**

© Sarah Hackett 2011

[www.lol4life.co.uk](http://www.lol4life.co.uk)